



Citizens for Conservation

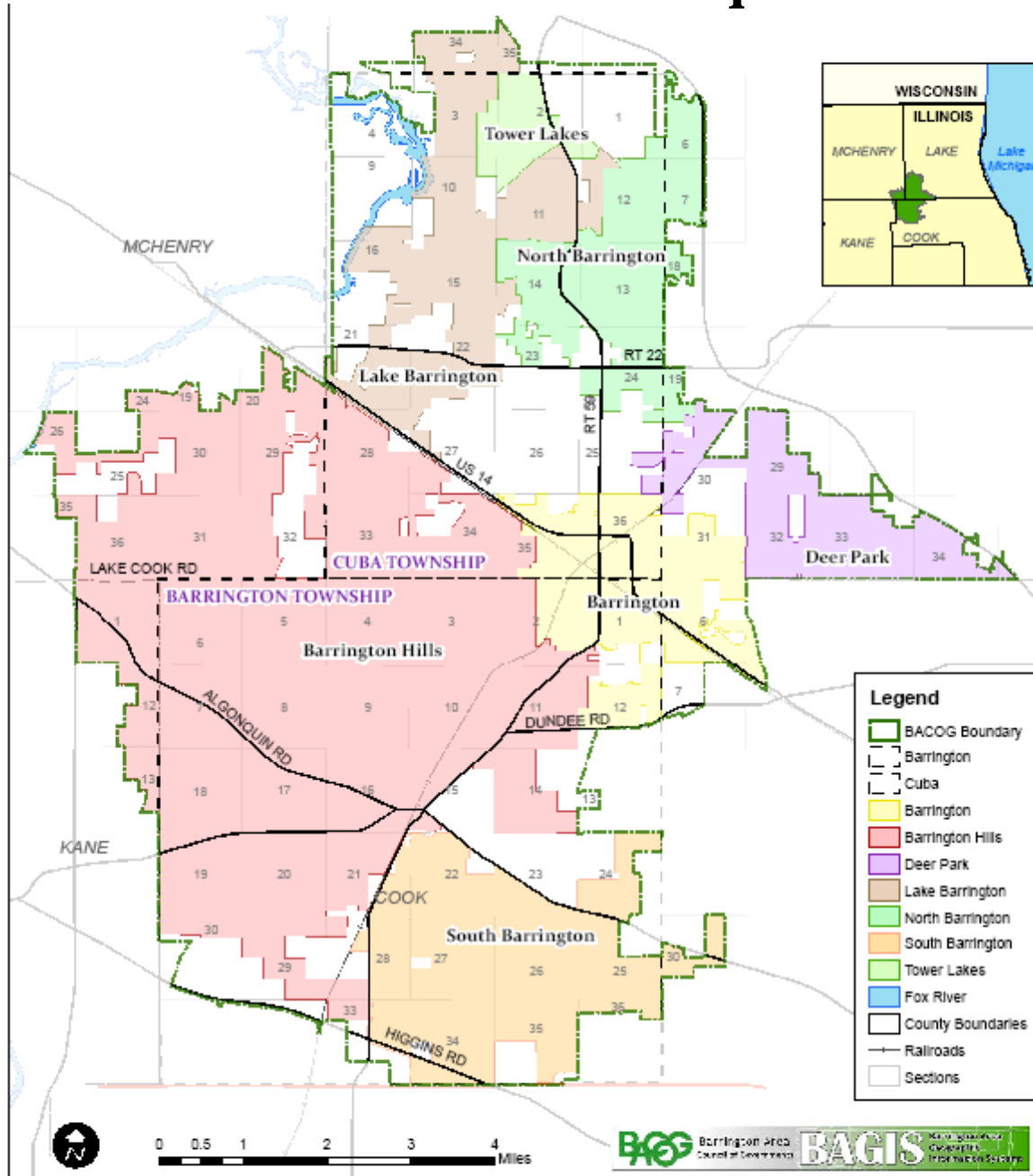
Incorporated 1971

Saving Living Space for Living Things

*through protection, restoration and
stewardship of land, conservation of
natural resources and education*



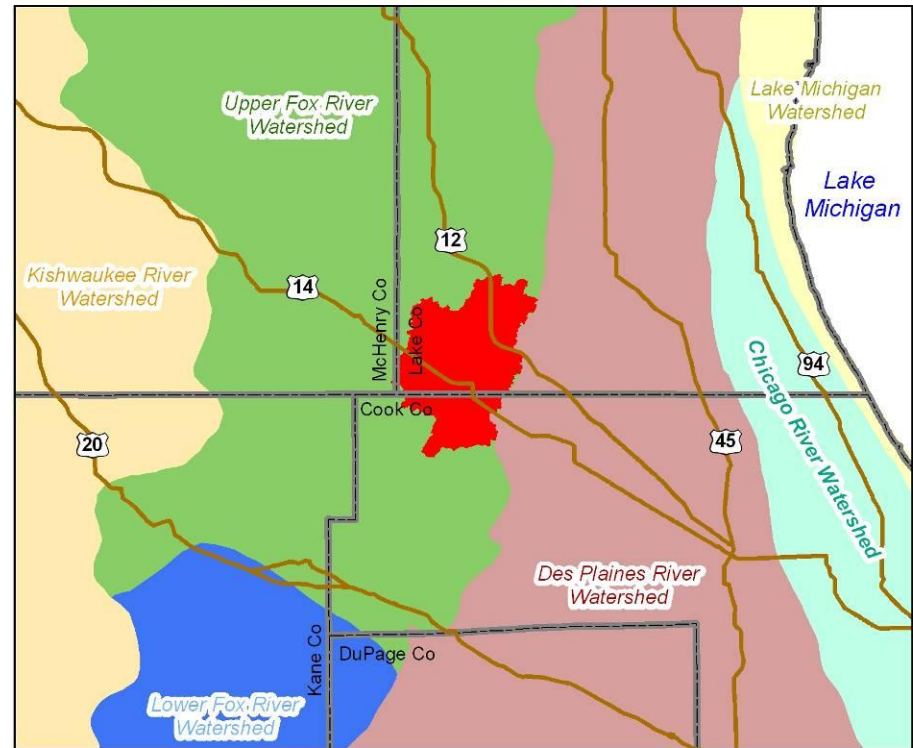
Citizens for Conservation covers the 90 sq. mi. BACOG area



Project Location



Watershed Locator Maps



**Flint Creek Subwatershed
Lake, Cook & McHenry Counties, Illinois**



DATA SOURCES:
ESRI Base Data
NRCS: <http://datagateway.nrcs.usda.gov/>

“The white farmhouse with a silo”



Citizens for Conservation

Land protection

Owns 355 acres, 10 preserves

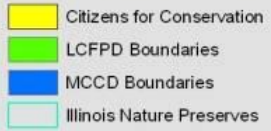
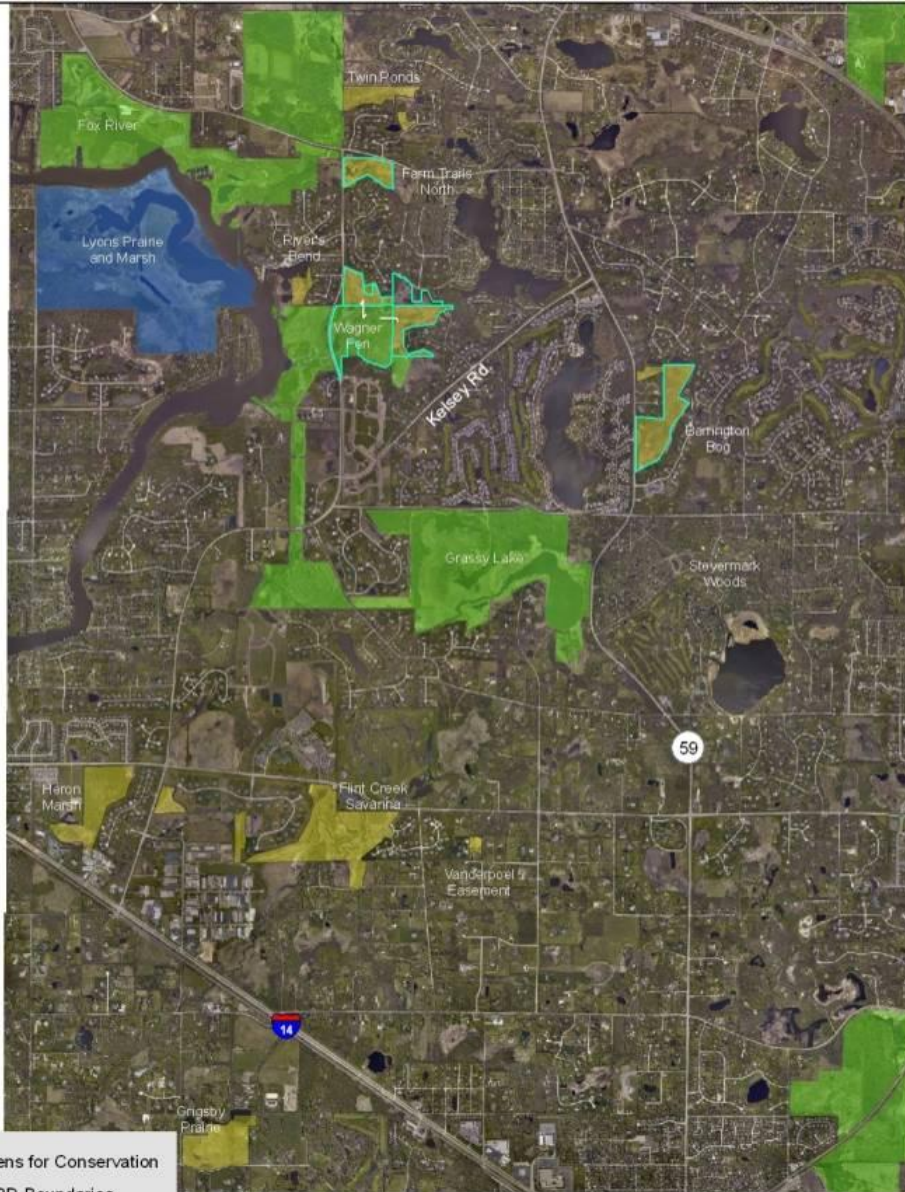
Helped protect 2600 acres and create four new forest preserves

Lake County:

Cuba Marsh, Fox River, Grassy Lake

Cook County:

- Baker's Lake Younghusband Prairie Preserve**





How do we do it?

- Part time staff director
- 15-20 directors
- 2-4 summer interns
- Several hundred volunteers



Volunteer recruitment

- **Web** - VolunteerMatch, Chicagoland Environmental Network/Chicago Wilderness, serve.gov (which points to VolunteerMatch), Volunteer Stewardship Network of the The Nature Conservancy, National Public Lands Day, Make a Difference Day, our web site
- **Referrals** from other organizations
- **Harper College** – one or two professors refer their students to us
- **Barrington High School** – volunteer hours for graduation, National Honor Society and Ecology Club, high school board reps, bulletin board
- **Scouts** - Eagle Scouts to us for projects and troops for workdays
- **Press** – local newspapers & magazines, free public access channel, library electronic board, environmental fairs, CFC e-update and News
- **Networking** - someone mentions us to their friend, neighbor, etc. or a volunteer recommends an active volunteer for another opportunity

Volunteer recognition

- personal note or verbal thank you
- awards at annual meeting - by hours, years, extraordinary contribution, and extra effort on a project (Thank You awards)
- a mention in our online or printed newsletters or in the newspaper
- annual Volunteer Bonfire

Working board





Family





Our Volunteers Are The Reason For Our Success

- 
- Regular workdays year round
 - Access to expertise
 - Enthusiastic champions





www.CitizensforConservation.org

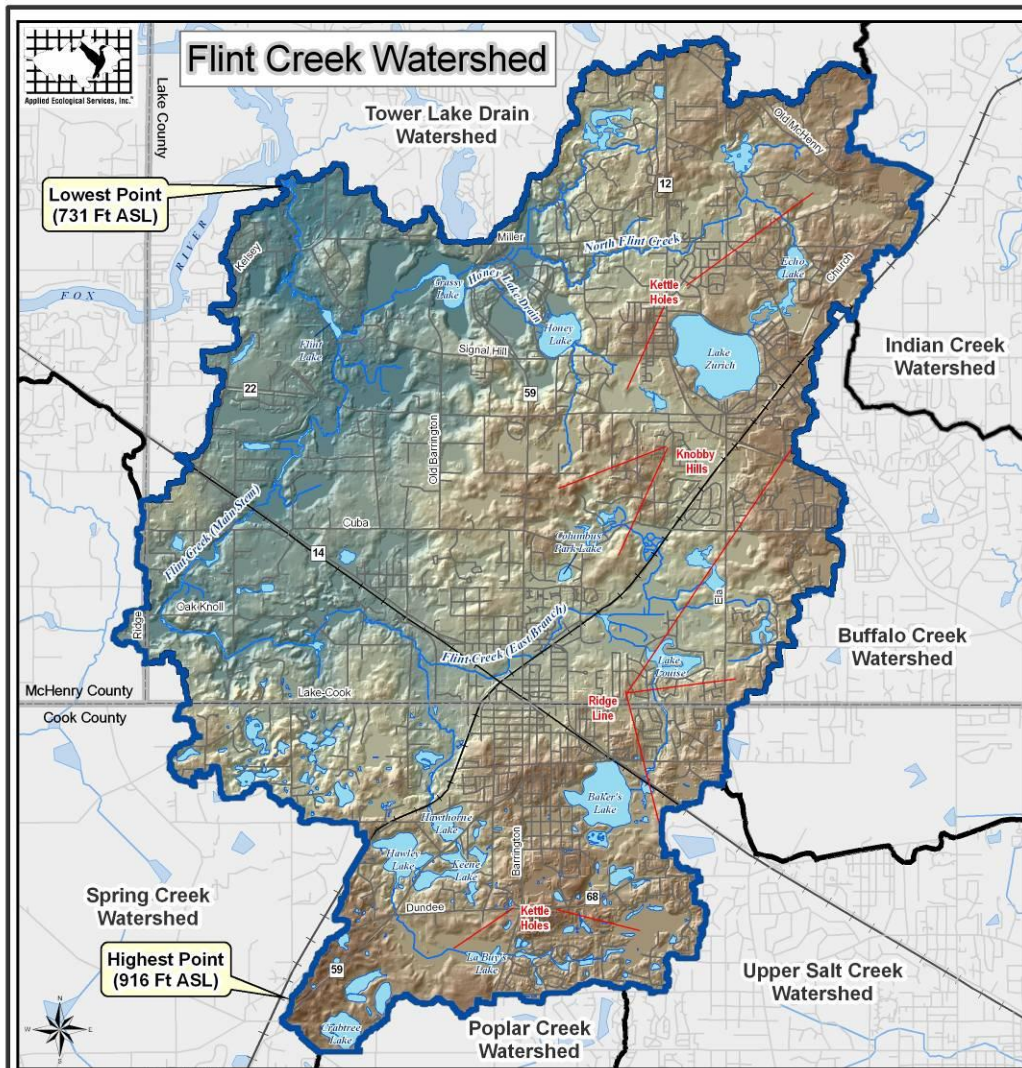




Flint Creek Watershed

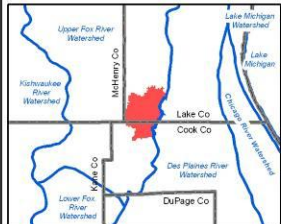
Protection &
Restoration Strategy

Executive Summary
December 2007



DATA SOURCES
 Lake County Information & Technology
 Cook County Research Department
 McHenry County Information Technology

Figure 7: Digital Elevation Model



Flint Creek Watershed Locator Map
 Lake, Cook, McHenry Counties, Illinois

Legend

Road	Open Water	Elevation (Feet Above Sea Level) High : 921 Ft. Low : 725 Ft.
Rail Road	County Boundary	
River & Stream	Adjacent Watershed	
	Flint Creek Watershed	

