

How to slow the runoff from these 1000 new homes and from a 1000 new homes upstream of the Grove

West Branch

Phase 3
2011

East Branch

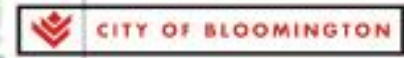
Phase 2
2009

Phase 1
2008

- 1 AMPHITHEATER - 250 SEATS AND LAWN SEATING
- 2 SCULPTURE ART WALK
- 3 INTERPRETIVE SHELTER AND MANY TRAIL STATIONS
- 4 CARILLON BELLS
- 5 PEDESTRIAN BRIDGE / WEIR
- 6 COMMUNITY CENTER
- 7 PLAYGROUND
- 8 3 SOFTBALL FIELDS
- 9 SYNTHETIC SOCCAR FIELD
- 10 PICNIC SHELTER

88 ACRES
PASSIVE

20 ACRES
ACTIVE

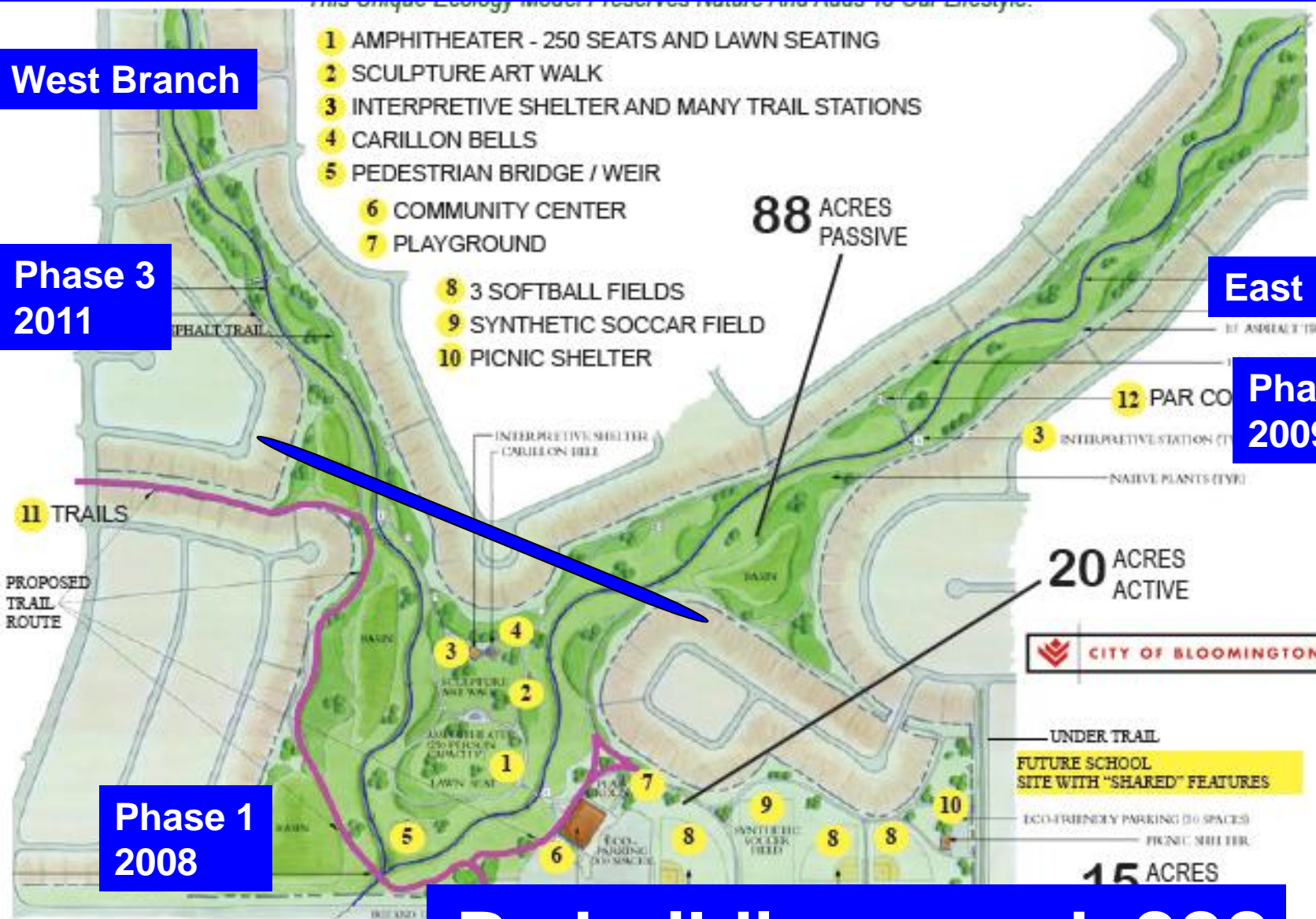


UNDER TRAIL
FUTURE SCHOOL
SITE WITH "SHARED" FEATURES

ECO-FRIENDLY PARKING (20 SPACES)
PICNIC SHELTER

15 ACRES

By building a park ???



We flood the Grove Park

To slow major floods,
in the Grove streams and wetlands
but we reduce sediment deposition,
and increase nutrient uptake in the park.



Oct 30 Flood



Nov 2, 2009



**Undersized Park Bridge restricts larger floods
Detains floodwater in the park above bridge.**

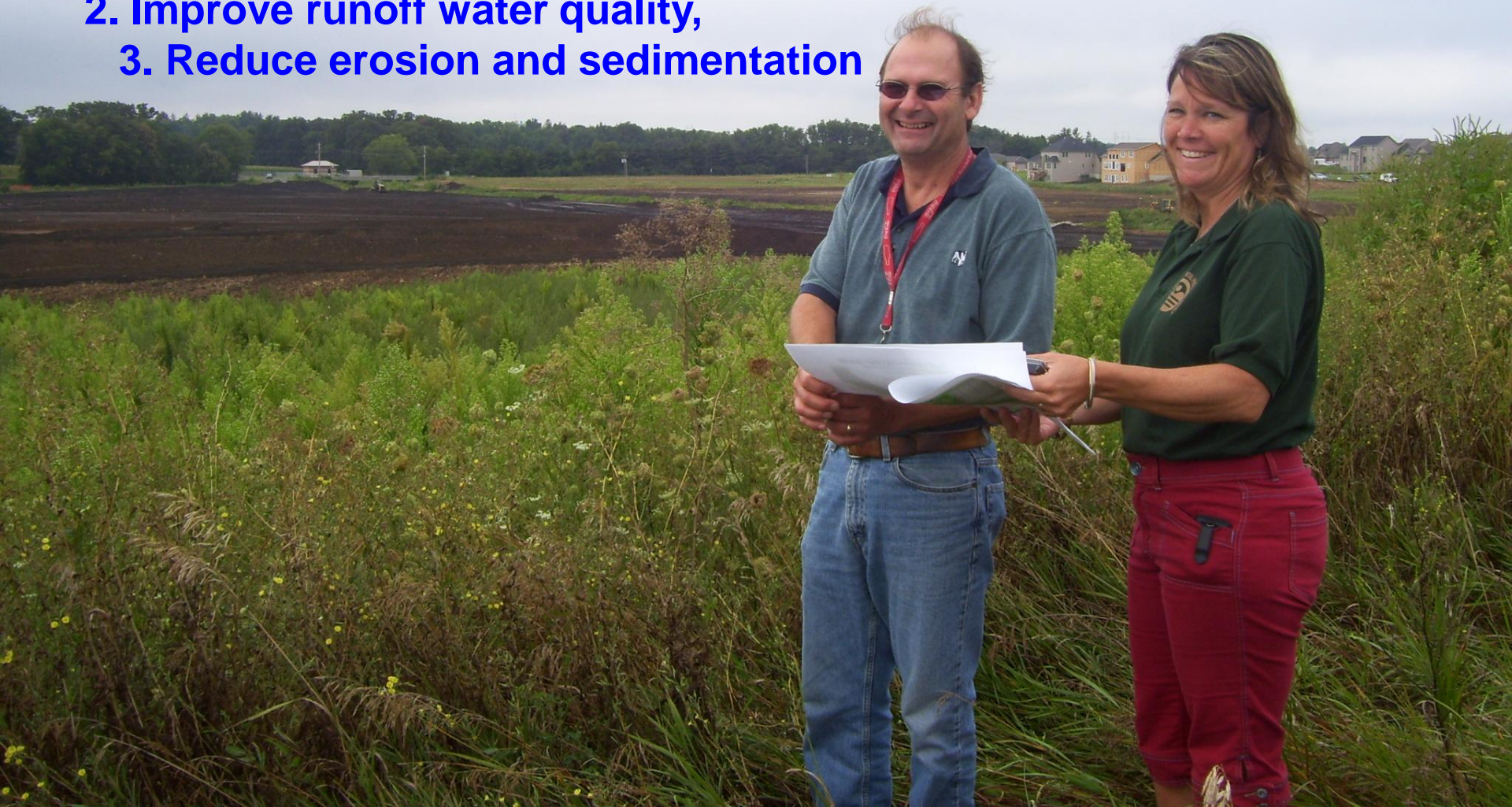
Brandon Lott

Helps IEPA 319 Grant Review

when the IEPA staff know that you are solving
Illinois water quality problems

At the Grove, the EPA objectives were

1. Slow residential runoff,
2. Improve runoff water quality,
3. Reduce erosion and sedimentation



Tour Talks and Locations

A. Parking in the Grove Housing Development

City view of Grove 319 project

Bloomington Park District - David Lamb and Neil Finlen

Prairie and wetland planting

Bryan Cross and Peter Martin

Developer's view of Grove 319 project

Bill Doud and Marshall Kaisner

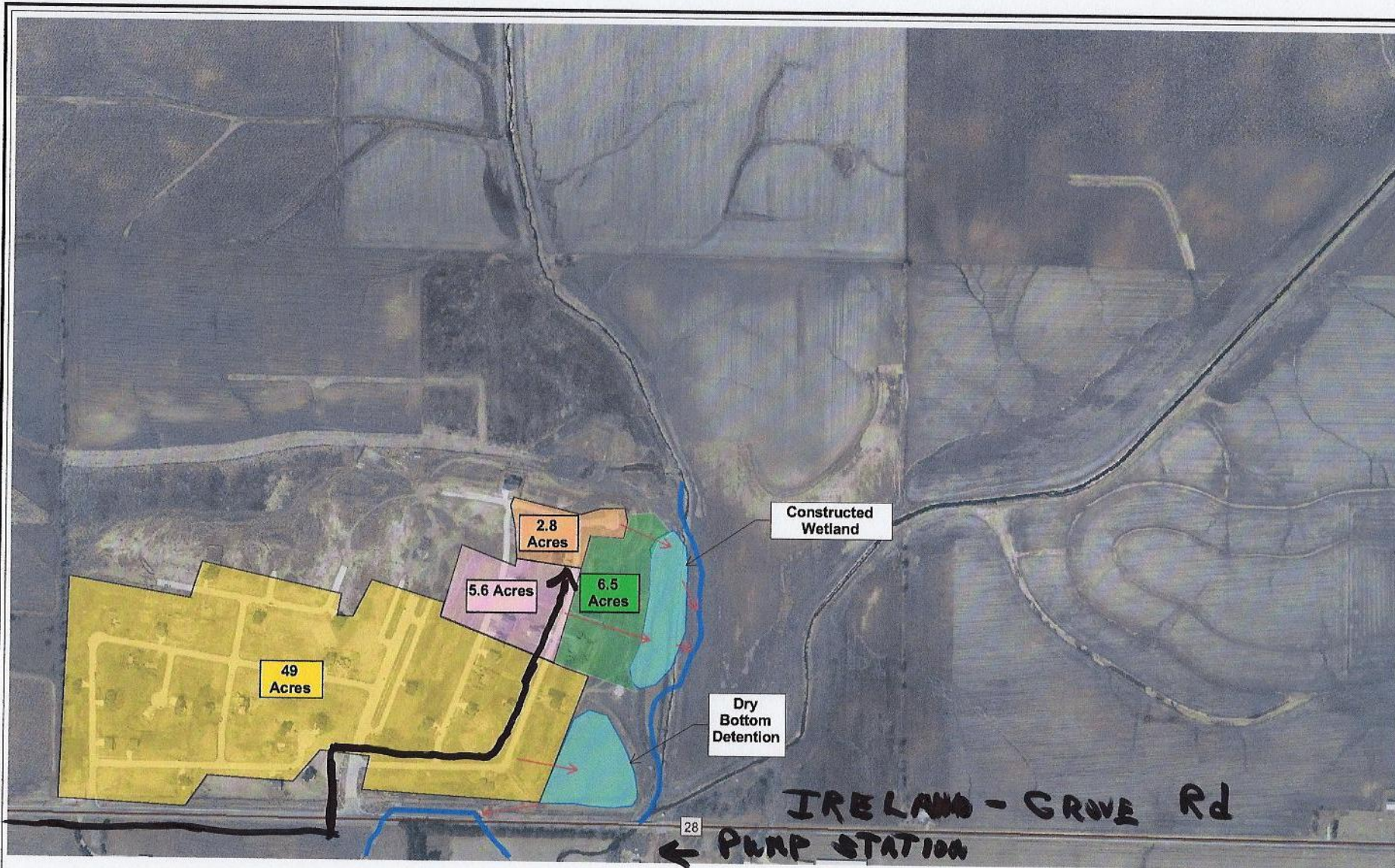
B. Parking at Pump Station

Stormwater control - Brandon Lott

Monitoring Stormwater runoff, sediment, and nutrients

- USGS – Tim Straub and Charles Bohall

Monitoring Fishery - IDNR Trent Thomas



By using this Web Site the user acknowledges his/her understanding of, and agreement with, the disclaimers and copyright restrictions on this data. Complete disclaimer at <http://www.McGIS.org/disclaimer>