

Building Capacity In Illinois Watersheds

Watershed Assessment Survey

Kim Erndt – Prairie Rivers Network



Watershed Assessment Survey



Special thanks to:

Karyn McDermaid – Visiting Research Specialist U of I

Dave White – U of I

Amy Walkenbach - IEPA

Cecily Smith – PRN

Dave Kamps – Hach Environmental

Charlie MacPherson – Tetra Tech Inc.

Tom Davenport – USEPA

Dennis Ross - ILMA

1. Why we created the survey

2. Preliminary results



3. Comments from our survey participants

WHY WE CREATED THE SURVEY

What are the skill sets needed in Illinois watersheds for effective watershed management?

Where are watershed efforts struggling?

Who is struggling?

Why are they struggling?

How can we improve the creation and implementation of effective watershed plans?



Who did we ask?

City Managers/Environmental Engineers

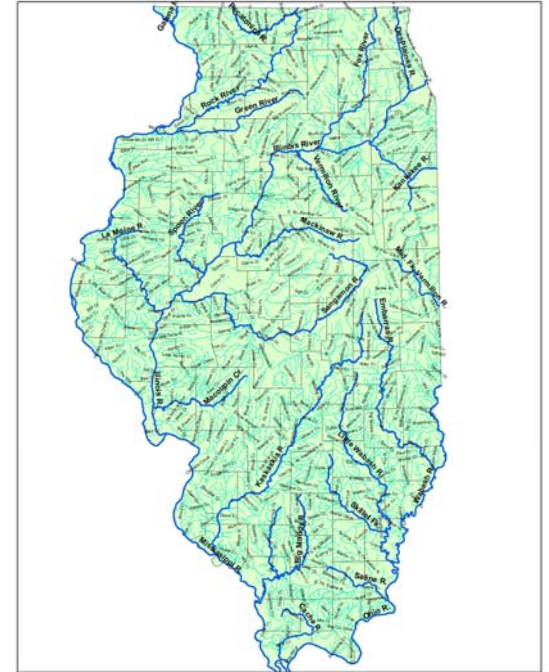
Watershed groups/Environmental NGOs

State employees

Anyone we knew that is involved in watershed planning, restoration or water resource issues.

This list ended up to consist of approximately 1100 individuals

There are more...



Who answered? (85 responses)

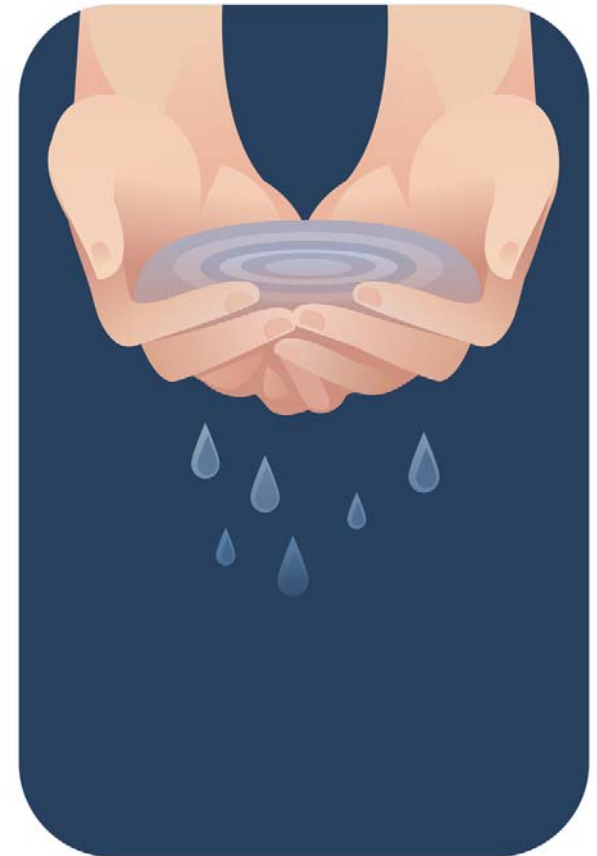
NGO – 40%

Local Municipal Group – 34%

State Agency/Organization – 15%

Academic Organization – 10%

Private Company – 1%



Who answered? (100 responses)

Paid Employee – 68%

Volunteer – 22%

Other 10%



Preliminary Results....



Some of the things we asked...

Preliminary Results....

What are the water quality problems in your area?

Erosion = 100%

Excessive Nutrients= 91%

Degraded Aquatic Habitat= 86%

Non-Native Plants or Animals = 84%

Pesticides = 64%

Bacterial Contamination = 63%

Heavy Metals = 35%



Preliminary Results....

How would you rate the general level of cooperation between your organization and the following?

Good Cooperation

IEPA	= 82%
Local Citizens	= 71%
IDNR	= 70%
Local Watershed Group	= 70%
Local SWCD	= 62%
Local Municipality	= 61%
USDA-NRCS	= 51%
Farm Bureau	= 47%
IDOA	= 43%
USEPA	= 43%
Local FSA	= 38%



Preliminary Results....

Rate your organization's in-house ability to perform the following activities...

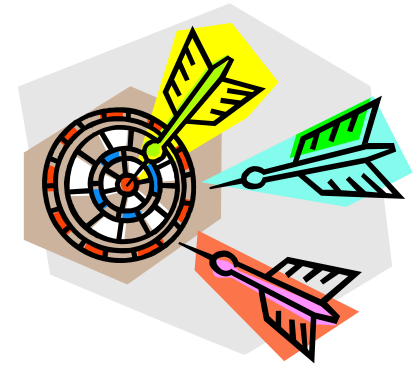
Sufficient Ability

Identify appropriate methods to correct or improve practices	72%
Conduct watershed planning effort	66%
Identify water quality problems	66%
Develop consensus among stakeholders	57%
Quantify water quality conditions	44%



Preliminary Results....

Rate your organization's in-house ability to...



Sufficient Ability

Identify a target audience for remediation or protection

57%

Identify critical areas for remediation or protection

57%

Design an education or outreach strategy to engage citizens

55%

Design an implementation strategy to address
water quality problems

55%

Use social indicators

35%

Preliminary Results....

Rate your organization's in-house ability to...



Sufficient Ability

Develop funding proposals

58%

Address the administrative requirements
of agency funding

58%

Attract funding

40%

Provide matching dollars for agency funding

28%

Solicit from local sources

20%

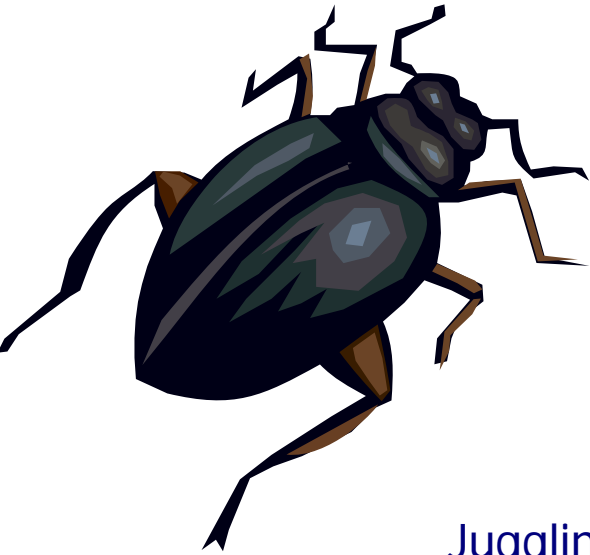
Preliminary Results....

If training workshops were developed to address the needs indicated above, how likely would you or someone from your group attend?

- 60% Likely attend but depends on location, timing, and expenses
- 28% Very likely attend if location, timing, and expense are not an issue
- 7% Probably not attend
- 4% Not sure
- 1% Definitely not attend



Comments we received...



What bugs you?

Juggling too much!!!

Many of you are doing more than one job.

The problems and issues are too complex to be dealt with on a part-time basis.

Comments we received...



You need a full time watershed planner or project manager.

You need one person to have their finger on the pulse of the watershed efforts.

You need a full-time person managing projects, fundraising, and overseeing/assisting with outreach.



Comments we received...

Communication and participation are poor at times...

It's difficult to get stakeholder participation and public input.

AND

Public outreach is not sufficient.



Comments we received...

You want to learn how to:

be effective at outreach.

form more partnerships.

get access to sound science strong and leadership.

form strong relationships and have good communication between different groups.



Comments we received...

You want someone with the ability to organize people and has knowledge of the watershed.



Comments we received...

You need someone in the group with a political mindset and connections.



Most common statement from all of you?





Thank you

www.prairierivers.org/survey

