

Understand your watershed through data & maps

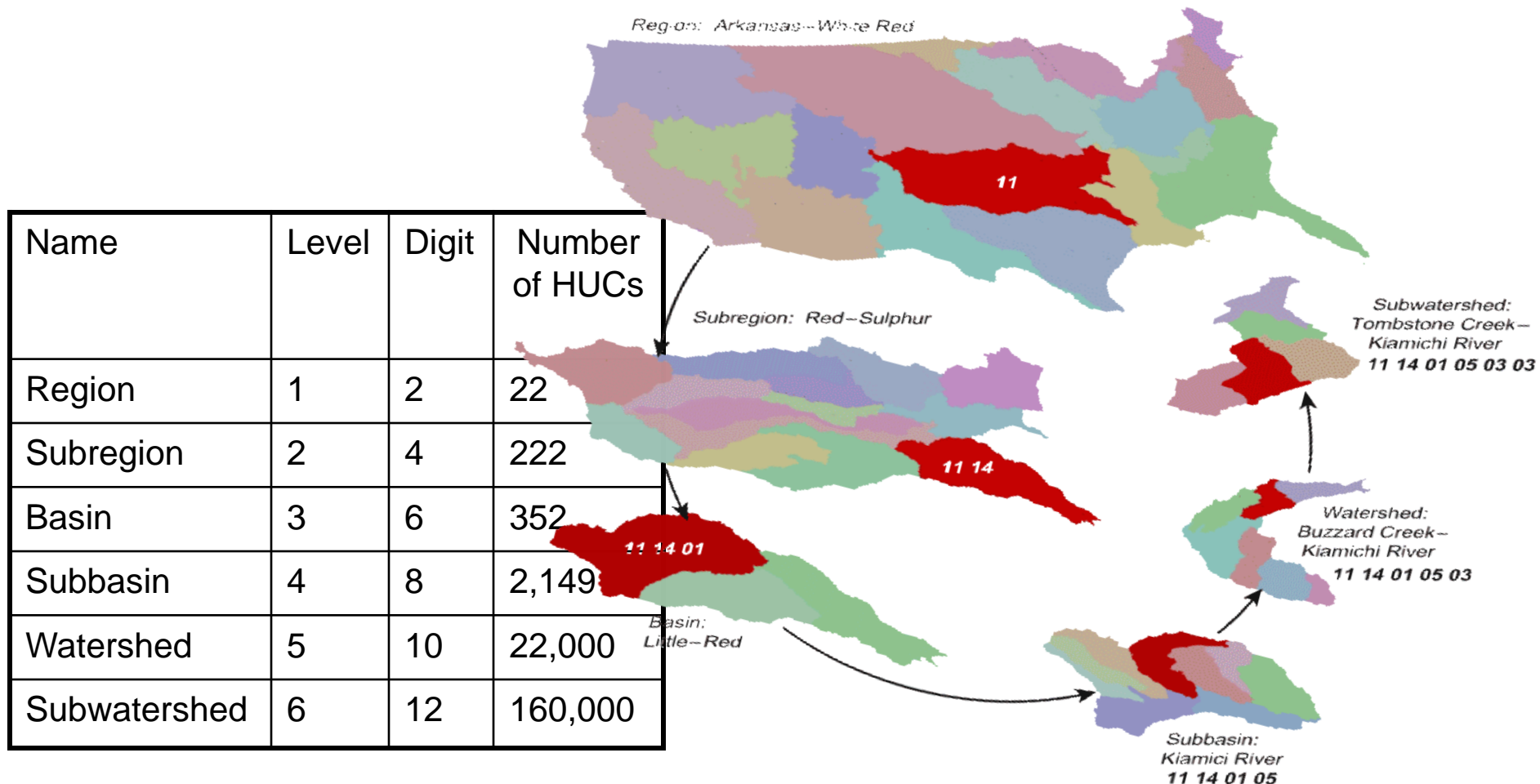
Carmen Masó & Lucy Stanfield
U.S. Environmental Protection Agency

Tools

- EPA's My Environment
- Enviromapper for Water
- Google Earth
- Illinois Resource Management Mapping Service

What is a Watershed Boundary?

A base layer of drainage boundaries and watershed information used in a wide variety of applications by those involved in water-resources management



Hydrologic Unit Codes

Example: 071200040404 (12-digit HUC) for
Salt Fork Watershed

05 12 01 09 06 05

↑
Region

↑
Subregion

↑
Basin

↑
Sub-basin

↑
Watershed

↑
Sub-watershed

Boundaries are delineated from 1:24,000 scale USGS topographic maps, digital elevation models, and digital raster graphic files.

Sample quick presentation

Watershed overview:

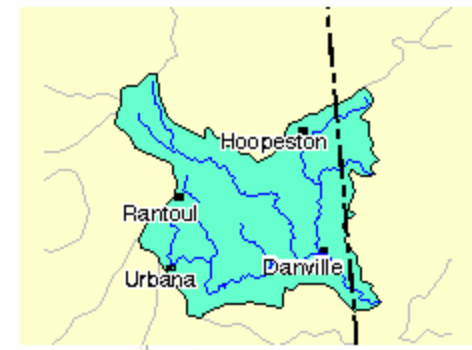
Salt Fork, Illinois

Vermilion Watershed -- 05120109

Number of Waters listed by State for Watershed

State Name	Waters on List	Effective Listing Cycle
ILLINOIS	22	2006

Total Number of Waters Listed: 22



Listed Water Information

CYCLE : 2006

Click [here](#) to see metadata for this report.

Cycle: 2006 **State:** IL **List ID:** IL_BPJ-07
Waterbody Name: SALT FK. VERMILION R.
State Basin Name: WABASH RIVER
Listed Water Map Link: No Mapping Data

Other Impaired Water 303(d) List Information

The most current report available for this water body is 2006.

4

State List IDs:

Cycle	State List ID
2006	IL_BPJ-07

State Impairments:

State Impairment	Parent Impairment	Priority	Rank	Targeted Flag	Anticipated TMDL Submittal
FECAL COLIFORM	PATHOGENS	MEDIUM			

Total Maximum Daily Load (TMDL) Information:

There were no TMDLs reported to EPA by the state.

Watershed Information:

Watershed Name	Watershed States
VERMILION	ILLINOIS INDIANA

Listed Water Information

CYCLE : 2006

Click [here](#) to see metadata for this report.

Cycle: 2006 **State:** IL **List ID:** IL_BPJ 12
Waterbody Name: SALT FK. VERMILION RIVER
State Basin Name: WABASH RIVER
Listed Water Map Link: [Map Impaired Water](#)

Other Impaired Water 303(d) List Information

The most current report available for this water body is 2006.
Data are also available for these years: [2004](#)

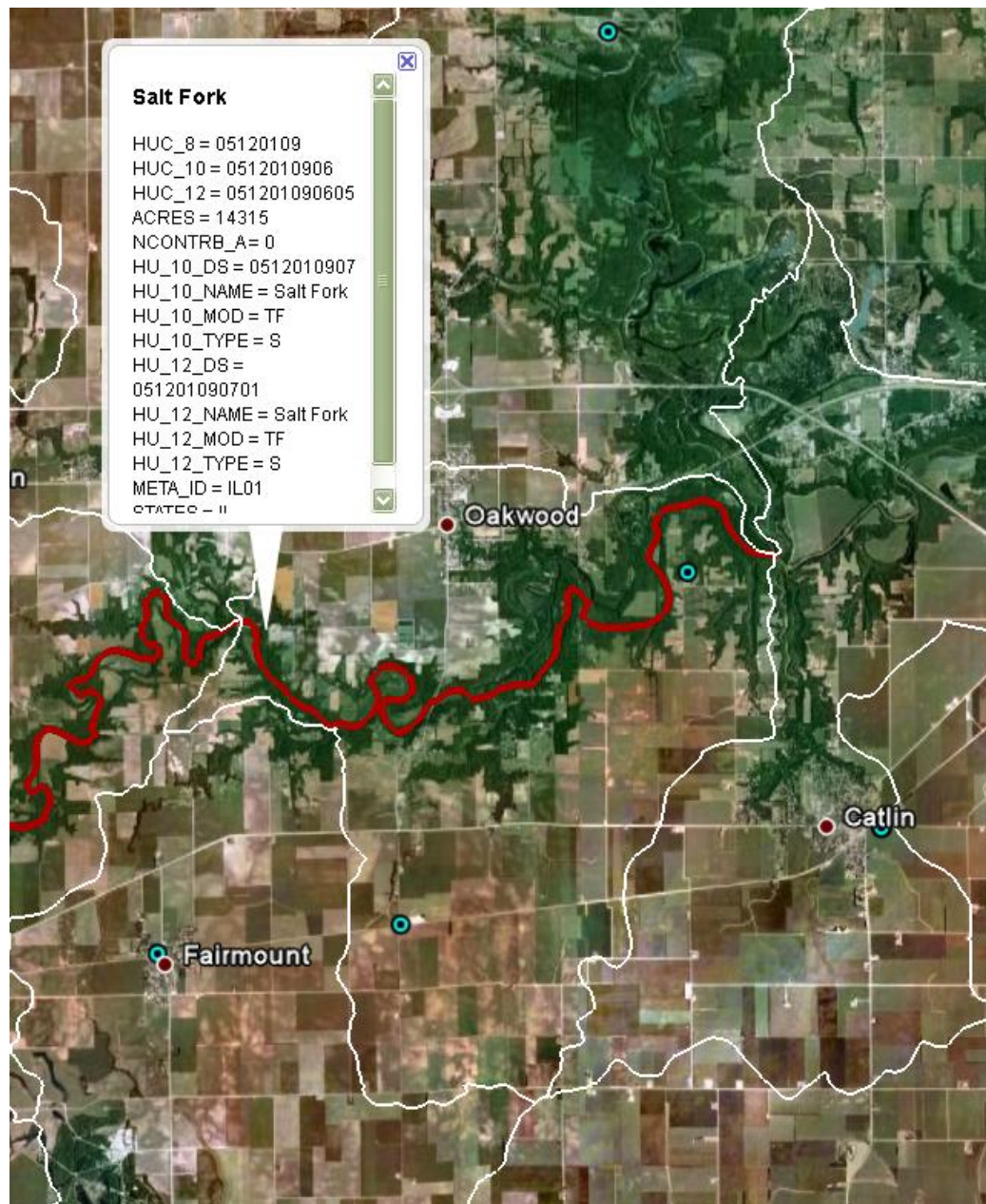
OGEN, TOTAL PHOSPHORUS, TSS

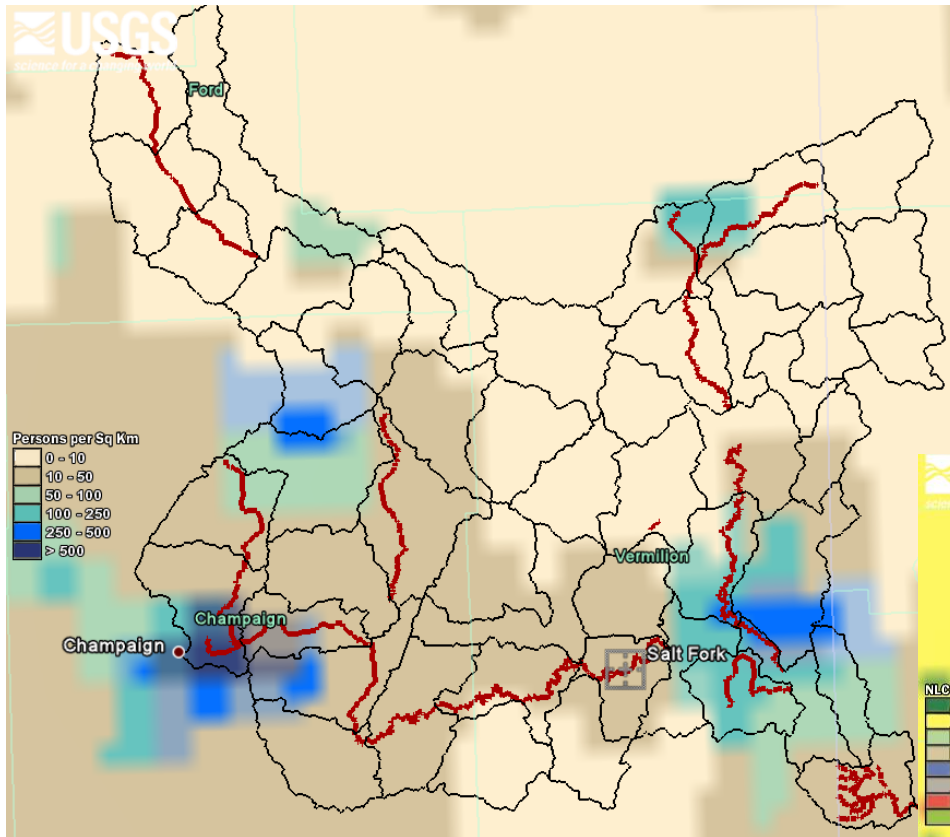
State List IDs:

Cycle	State List ID
2004	BPJ 12
2006	IL_BPJ-12

State Impairments:

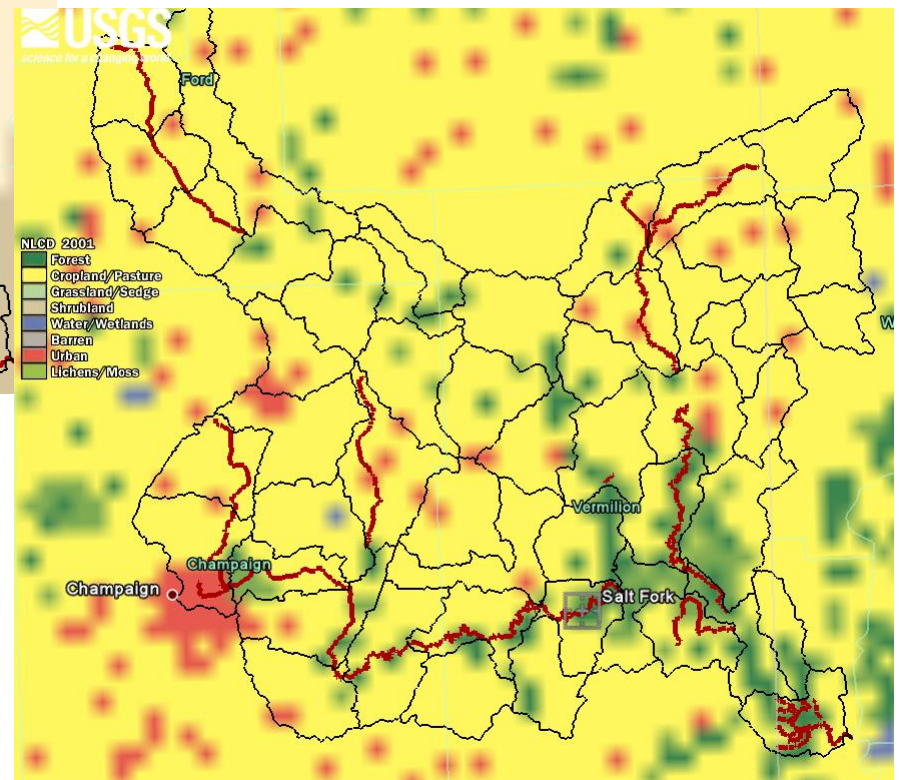
State Impairment	Parent Impairment	Priority	Rank	Targeted Flag	Anticipated TMDL Submittal
PH	PH	HIGH			
TOTAL AMMONIA	AMMONIA	MEDIUM			
TOTAL NITROGEN	NUTRIENTS	HIGH			
TOTAL PHOSPHORUS	NUTRIENTS	HIGH			
TOTAL SUSPENDED SOLIDS	TURBIDITY	HIGH			





Population Density - 2000

Land Cover - 2001



Materials for today's workshop

- Training Manual
 - Overview of Watershed
 - Mapping tools with step-by-step instructions
 - Watershed Worksheet to fill out
 - Website links
 - Google Earth tips
- On your desktop
 - Folder named Watershed Training

