

Websites Made Easy: Template for Watersheds

Modified from a presentation by
Kelly Levensgood and Gwen White

Issue

- Watershed groups need rudimentary functional website to store and present information for stakeholder engagement.
- Requirements:
 - Scarce/limited funding for design and hosting
 - Low maintenance
 - Easy entry point for non technical users

Presentation

- Answers to frequently asked questions
- Content and components common to most watershed projects
- Design tips for user-friendly and appealing site
- Easy-to use templates for simple website design
- Suggestions on web hosting options

Content for typical watershed website

- Introduction and invitation to join the project:
 - Location (major towns, features, highways-maps)
 - Mission statement /purpose of project
 - Sources of funding
 - Invitation to participate: how they can contribute? How will they benefit/
 - Photos from activities

.....New Gazette and Meeting Minutes Now Online , See you at the Meeting

Contact Us

Membership Form

Meeting Minutes

Guardian Gazette

Water Quality Monitoring

Director: Sarah Brichford, (765) 883-8319 email: sbrichford@yahoo.com

Guardians regularly visit specific sites along the creek and its major tributaries to take samples and conduct tests of water quality.





Watershed News

A watershed assessment project progress report

December 1999

In This Update

Closing the Gaps in Monitoring and Watershed Characterization

GAEPD Commends Rockdale County on Watershed Planning

New Water Quantity/Hydrologic Model Will Reduce Flooding Impacts

SWIFT Committee Developing Funding Options for Stormwater Management

Educating the Public



The five primary watersheds in Rockdale County

Closing the Gaps in Monitoring and Watershed Characterization

At our last meeting, the Consultant Team reported on the Preliminary Watershed Characterization. The team also outlined ways to fill information gaps. The techniques discussed included monitoring to improve our understanding of key ecological features affecting the amount and quality of waterways running through Rockdale County and key factors threatening or causing impairment (See handout October 25, 1999 Information Item: Preliminary Watershed Characterization for Rockdale County). In early November, the team

completed the biological sampling at 35 stream locations scattered throughout all five of Rockdale County's primary watersheds. Laboratory analysis of the samples was completed in December, and data analysis is now underway. The repetitive analysis of fish, benthic macroinvertebrates (principally aquatic insects), and physical analysis will be used to create indicators of ecological condition and tell us about the overall health of streams. Initial interpretation of the results will be provided to the Committee at the January work session.

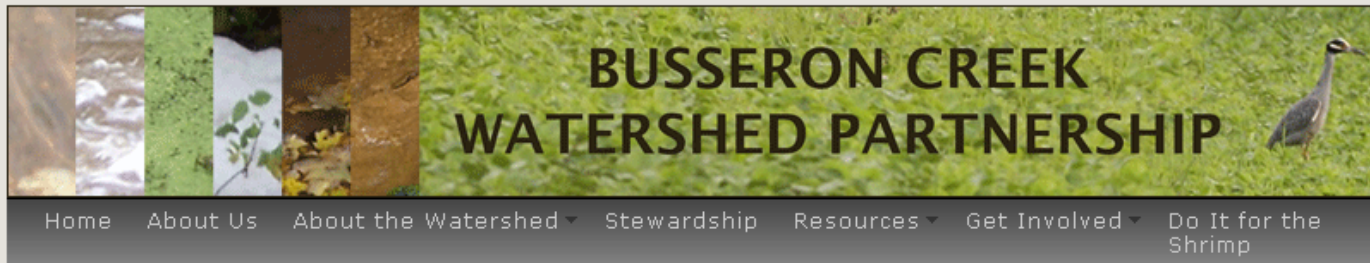


Biological samples were collected from 35 streams sites around Rockdale County, including Snapping Shoals Creek shown here.

GAEPD Commends Rockdale County on Watershed Planning

Initial water quality and watershed modeling results were submitted to Georgia Environmental Protection Division (GAEPD) for review and comment. This effort helped determine what direct water quality impacts might occur as a result of the proposed increase in wastewater discharge volume. It also helped determine what water quality changes might occur as a result of nonpoint runoff associated with anticipated future growth and development. In addition to identifying potential water quality impacts, the report identifies the levels of wastewater treatment and controls on nonpoint sources necessary to maintain and protect water quality into the future. County staff and project consultants

Why does it matter



Do it for the Shrimp

In the Gulf of Mexico is a large region of water that is very low in oxygen, and therefore cannot support life. It is believed to be caused by excess nutrients delivered from the Mississippi River in combination with seasonal stratification of Gulf waters. Excess nutrients promote algal and zooplankton growth. Organic matter from these blooms sink to the bottom where it decomposes, consuming available oxygen. Oxygen levels cannot be recharged from the O₂-rich surface waters, because the stratification (layering) of salt and fresh waters prevent the mixing necessary to do so.

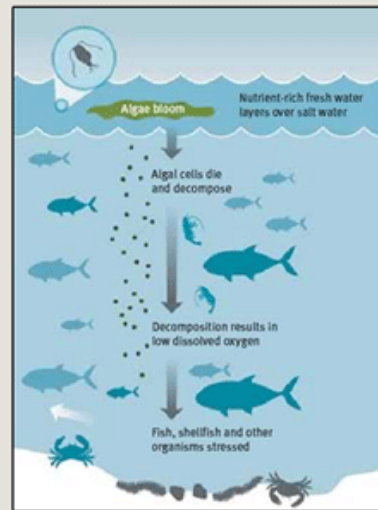


IMAGE FROM LACOAST.GOV

Any committee that is the slightest use is composed of people who are too busy to want to sit on it for a second longer that they have to.

- Katharine Whitehorn
British Journalist

Action Plan



More detail for interested stakeholders

- Events calendar (needs to be up to date)
- Comment form to gather input
- Timeline for project completion
- List of partners and sponsors
- Links to resources
- Contact information

What's up

- Upcoming Events:
- **June 5: Guardian Display Booth** 10am-4pm at Delphi Corp parking lot, Lincoln Rd., Kokomo, IN, Volunteers Needed Call Charlie at 765-437-6268
- **June 6: Celebrate the Wildcat Festival at Adam's Mill**, on the Creek just east of Cutler, 10 am - 5 pm, Mill tours, canoe rides, nature hikes & exhibits, music, artists, and much more! Volunteers Needed, Call Charlie at 765-437-6268
- **June 15: Monthly meeting - 5:30 pm social, 6:30 pm meeting, Burlington, IN**
- **July 31-August 3: Indiana Paddlers'**

Store and present information

- Dates for past and future meetings
- Agenda for next meeting (list as draft)
- Notes/past presentations
- Data, results, graphs and interpretation
- Draft plan for public review

Post your plan for public review

- Make sure site works
- Provide comment
- Provide schedule
- Provide contact information

Marion County Soil & Water Conservation District

Lower Fall Creek Watershed - HUC 05120201110

About us ...

The Plan

Meetings ...

Timeline ...

News ...

Map ...

Brochure ...

IDEM ...

SWCD's ...

Contact us ...

Preface

Introduction

Overview

Water Quality

Critical Areas

Goals

Implementation

Exhibits

Appendicies

Waterbodies

Land Use

Sediment

Nutrients

Pathogens



What to Post

- Information that is up-to-date
- Key messages for stakeholders
- Recognition of sponsors and volunteer contribution (get permission)
- Photos of events & accomplishments

Simple but action-oriented

The Plan

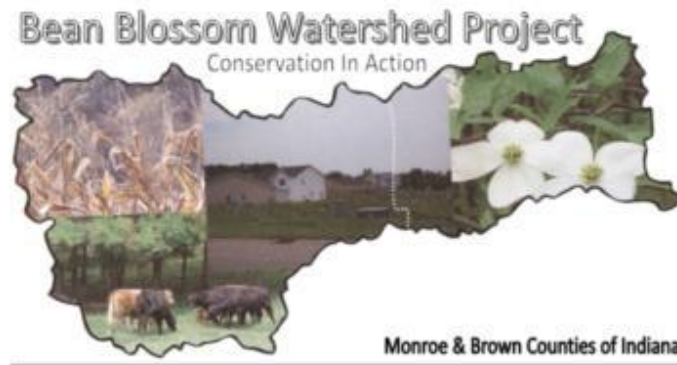
The Priority Action Items

Talking Points Sheet

Sample Commitment Letter

Stakeholder Members List

Minutes from Stakeholder Meetings

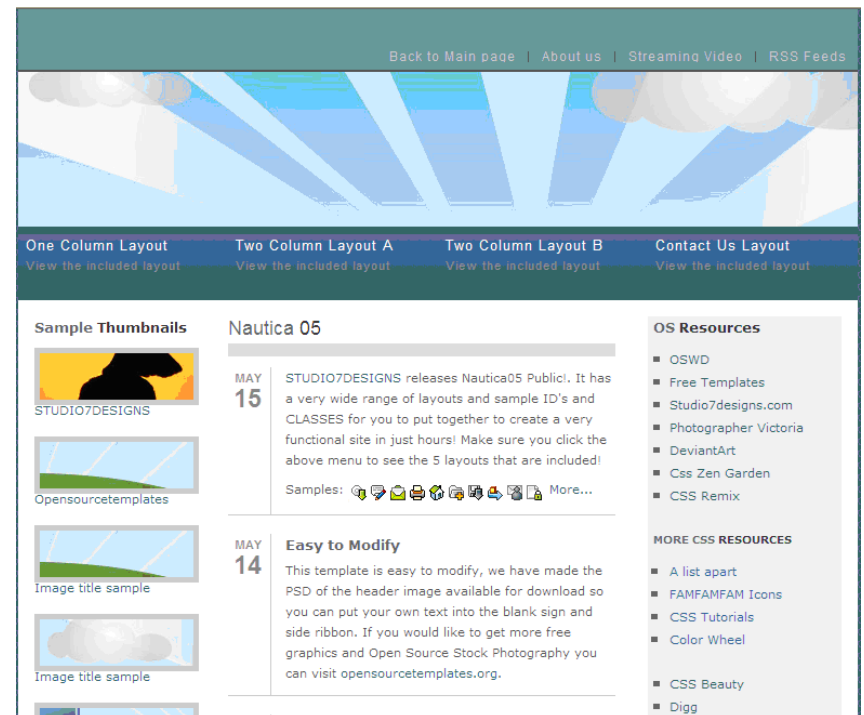


What not to post

- Information that is quickly out of date
- Personally identifying information (practices)
- Photographs of poor management practices that identify a potential participant or stakeholder

Template example

- Acquire template from internet
- Create and drop content into template



Frequently asked questions

- How do I register a domain name?
- What domain name should I choose?
- How do I set up a website?
- Website templates
- Do's and don'ts of web design

Examples of Watershed Websites in Illinois;

July 20, 2009 (C. Davis)

- Flint Creek Watershed ~ <http://www.flintcreekwatershed.org/vision.html>
- Nippersink Lake Watershed ~ <http://nippersink.org/index.htm>
- LaMoine River Watershed ~ <http://www.lamoineriver.org/>
- Aux Sable Creek Watershed ~ <http://www.auxsablecreekwatershed.org/>
- Fox River Ecosystem Partnership ~ <http://www.foxriverecosystem.org/index.htm>
- Upper Des Plaines River Watershed ~ <http://www.upperdesplainesriver.org/index.htm>
- Multiple Lake County Watersheds (North Branch Chicago) ~ <http://www.lakecountyil.gov/Stormwater/LakeCountyWatersheds/Default.htm>
- DuPage River Salt Creek Workgroup ~ <http://www.drscw.org/index.html>
- Champaign County Soil & Water Conservation District – Upper Salt Fork of the Vermilion River ~ <http://www.ccswcd.com/default.php>
- Tyler Creek Watershed ~ <http://tylercreek.org/index.htm>
- Lake Bloomington & Lake Evergreen Watersheds ~ <http://mcleantmdl.com>
- Greater Bear Creek Watershed ~ <http://www.adamsswcd.org>
- Kishwaukee River Ecosystem Partnership ~ <http://krep.bios.niu.edu/>
- Prairie Rivers~: <http://prairierivers.org/>